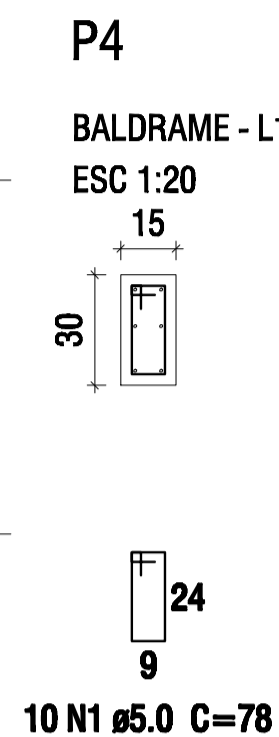
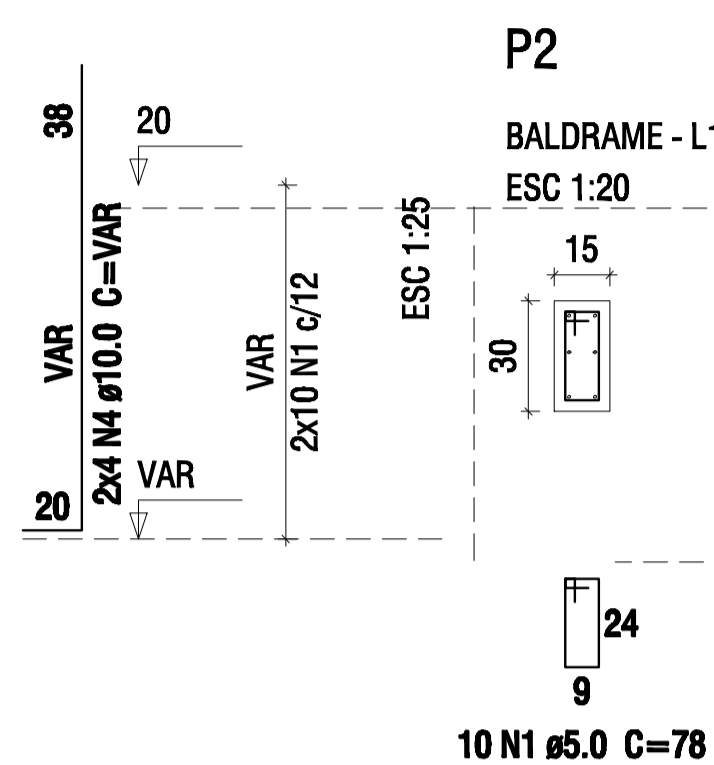
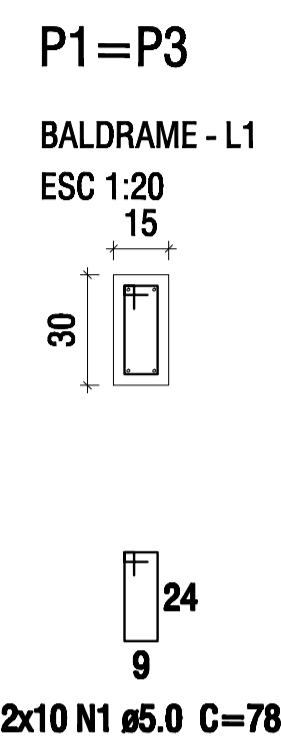
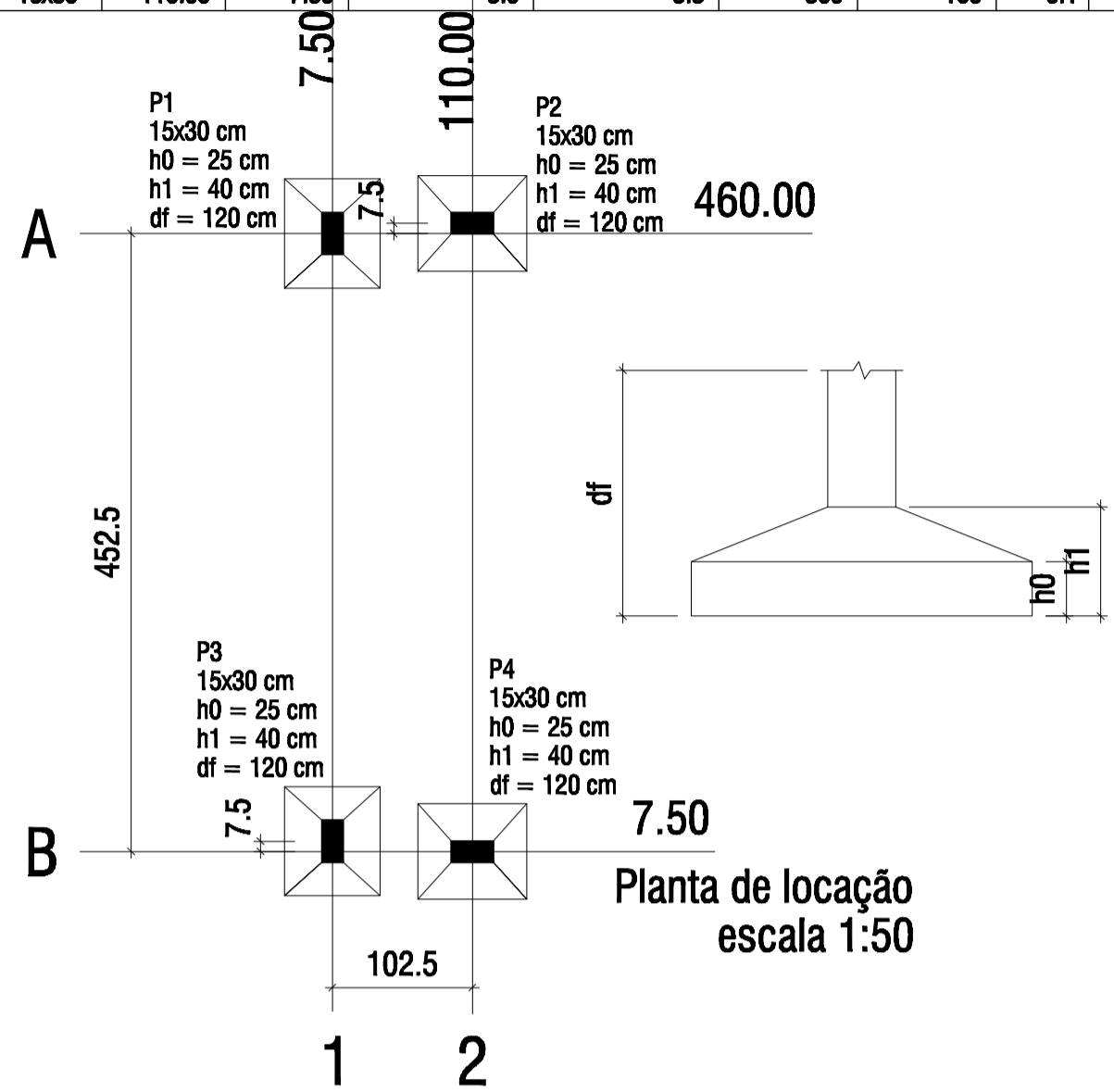
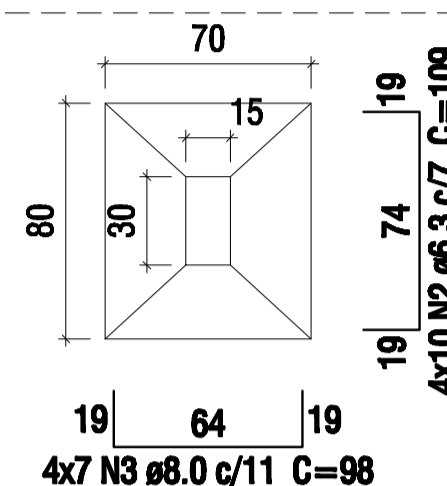


Nome	Seção (cm)	X (cm)	Y (cm)	Pilar					Fundação					
				Carga Máx. (t)	Carga Mín. (t)	Mx (kgf.m)	My (kgf.m)	Fx (t)	Fy (t)	Lado B (cm)	Lado H (cm)	h0 / ha (cm)	h1 / hb (cm)	df (cm)
P1	15x30	7.50	460.00	3.1	2.9	300	100	0.1	0.6	70	80	25	40	120
P2	15x30	110.00	467.50	3.2	3.0	200	100	0.1	0.5	70	80	25	40	120
P3	15x30	7.50	15.00	3.5	3.2	300	100	0.1	0.6	70	80	25	40	120
P4	15x30	110.00	7.50	3.6	3.3	300	100	0.1	0.6	70	80	25	40	120

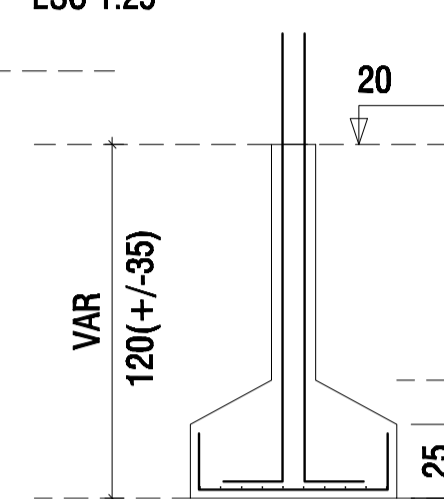


S1=S2=S3=S4

PLANTA ESC 1:25



CORTE ESC 1:25



S4 Relação do aço

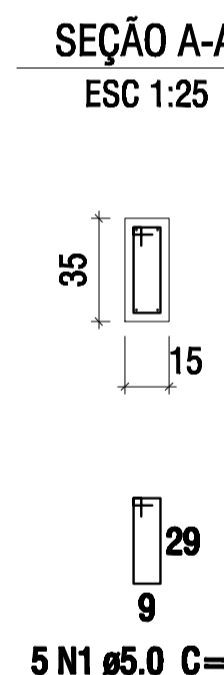
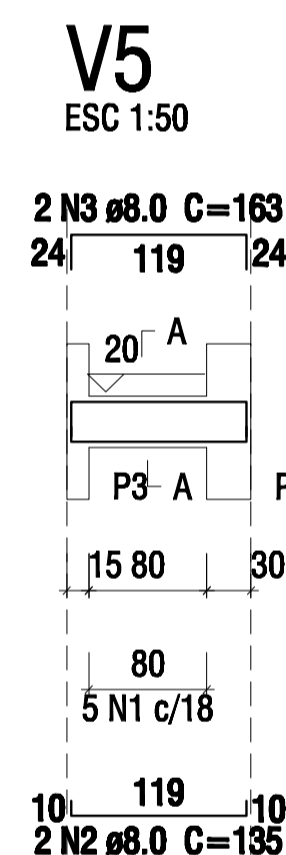
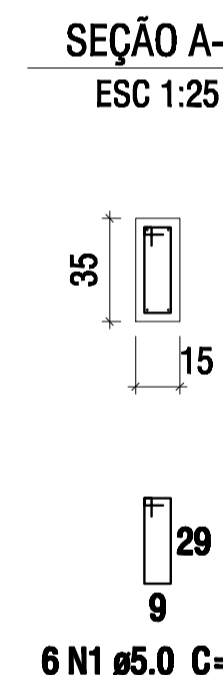
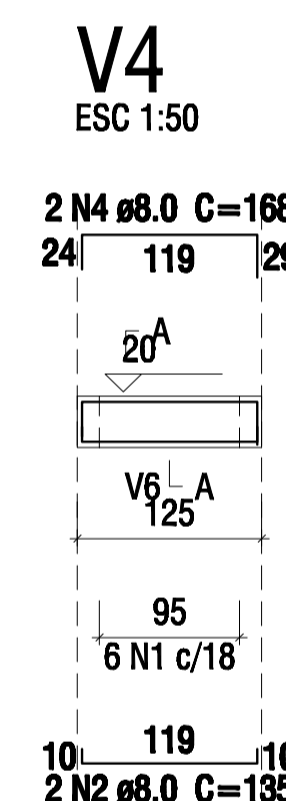
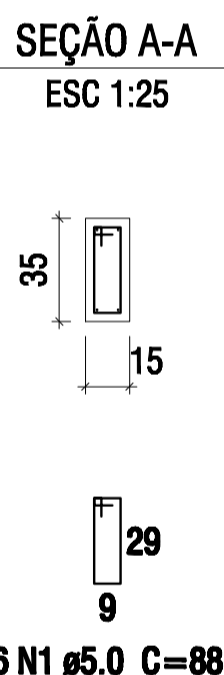
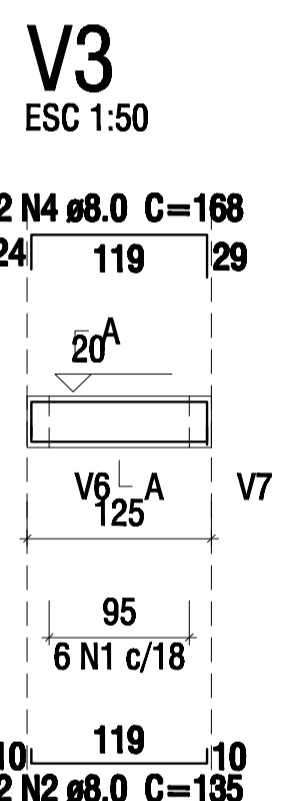
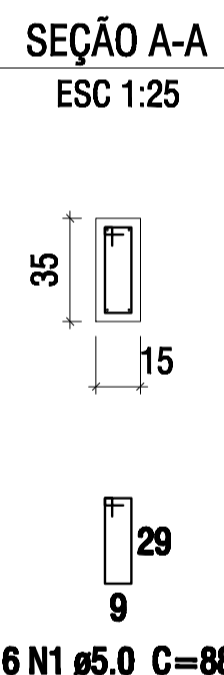
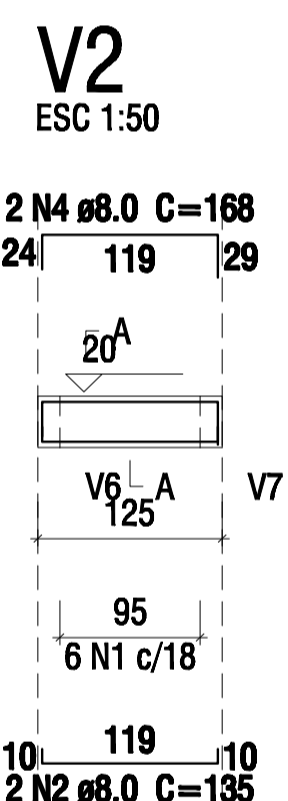
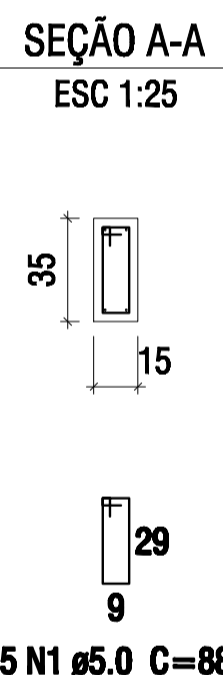
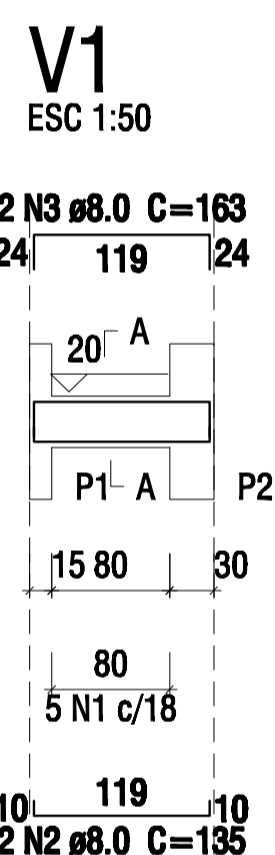
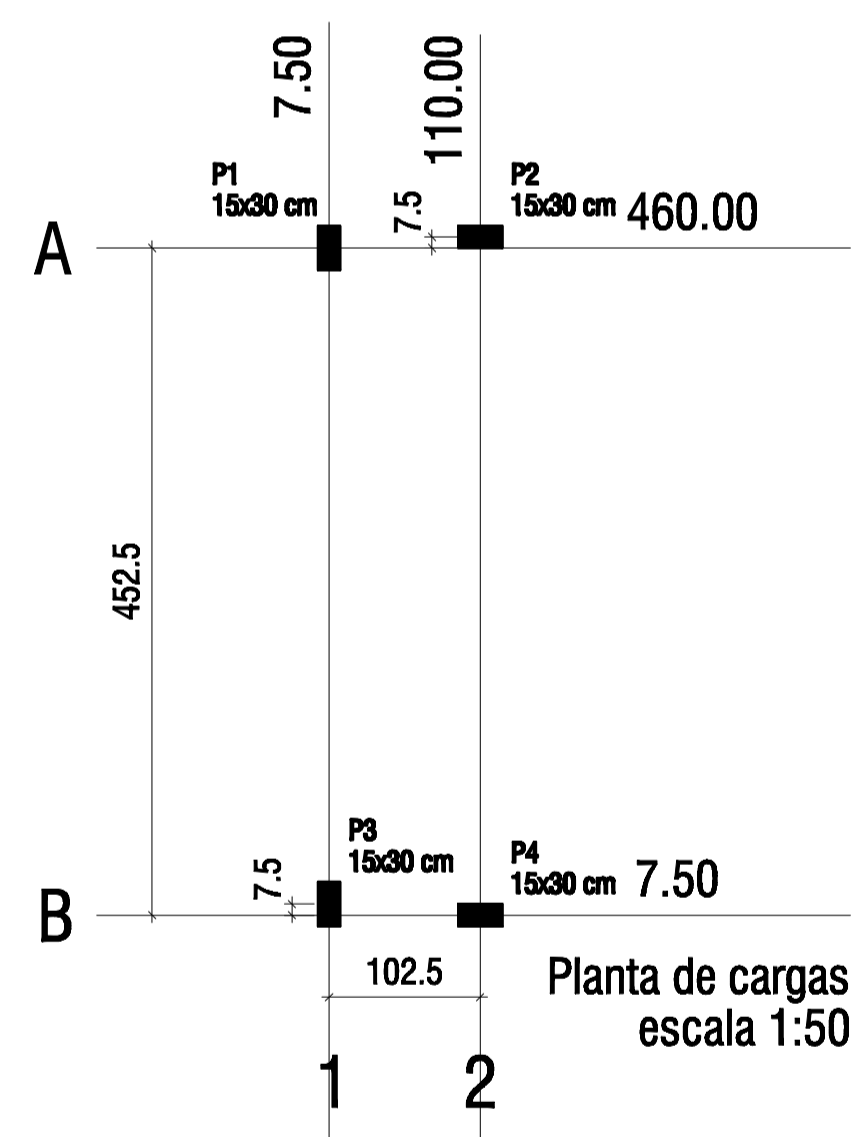
AÇO	N	DIAM (mm)	QUANT (Barras)	UNIT (cm)	C.TOTAL (cm)
CA60	1	5.0	40	78	3120
CA50	2	6.3	40	109	4360
	3	8.0	28	98	2744
	4	10.0	20	VAR	VAR

Resumo do aço

AÇO	DIAM (mm)	C.TOTAL (m)	PESO + 15 % (kg)
CA50	6.3	43.6	12.3
	8.0	27.5	12.5
	10.0	35.2	25
CA60	5.0	31.2	5.5
PESO TOTAL (kg)		Volume de concreto (C-25) = 0.93 m³	
CA50	49.7	Área de forma = 7.32 m²	
CA60	5.5		

Solo compactado sobre a sapata peso específico > 1600.00 kgf/m³

Nome	Seção (cm)	X (cm)	Y (cm)	Pilar					
				Carga Máx. (t)	Carga Mín. (t)	Mx (kgf.m)	My (kgf.m)	Fx (t)	Fy (t)
P1	15x30	7.50	460.00	3.1	2.9	300	100	0.1	0.6
P2	15x30	110.00	467.50	3.2	3.0	200	100	0.1	0.5
P3	15x30	7.50	15.00	3.5	3.2	300	100	0.1	0.6
P4	15x30	110.00	7.50	3.6	3.3	300	100	0.1	0.6

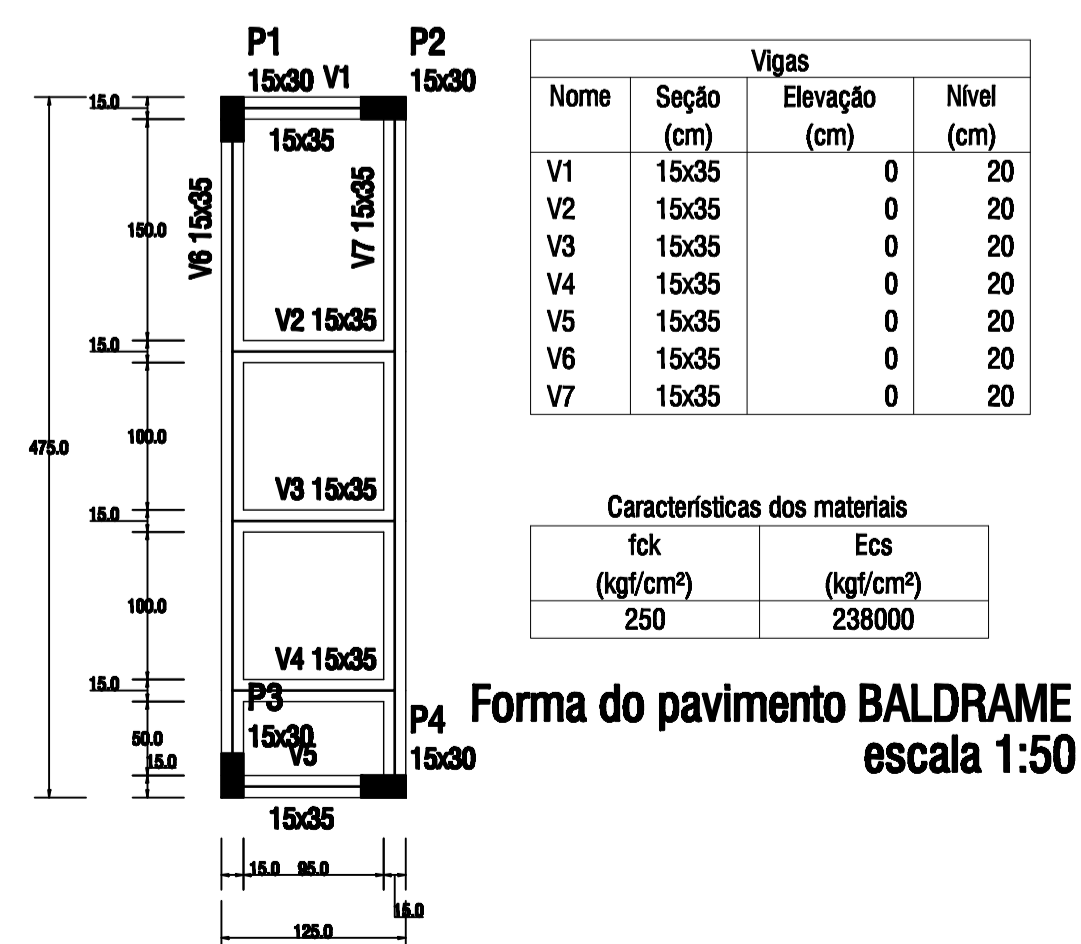


Relação do aço

AÇO	N	DIAM (mm)	QUANT (Barras)	UNIT (cm)	C.TOTAL (cm)
CA60	1	5.0	77	88	6776
CA50	2	8.0	10	135	1350
	3	8.0	4	163	652
	4	8.0	6	168	1008
	5	8.0	4	485	1940
	6	8.0	2	521	1042
	7	10.0	2	517	1034

Resumo do aço

AÇO	DIAM (mm)	C.TOTAL (m)	PESO + 15 % (kg)
CA50	8.0	60	27.2
	10.0	10.4	7.3
CA60	5.0	67.8	12
PESO TOTAL (kg)		Volume de concreto (C-25) = 0.83 m³	
CA50	34.5	Área de forma = 13.39 m²	
CA60	12		



**PREFEITURA MUNICIPAL DE PARANAGUÁ**  
 ADMINISTRAÇÃO Dr. EDISON DE OLIVEIRA KERSTEN  
 SECRETARIA MUNICIPAL DE PLANEJAMENTO, ORÇAMENTO E GESTÃO

**TÍTULO** PROJETO ESTRUTURAL

**OBRA** U.B.S. PRAIA DE ENCANTADAS - ILHA DO MEL

**CONTÉUDO** DEPOSITO DE LIXO - PLANTA DE LOCAÇÃO DE SAPATAS E PILARES - SAPATAS - FORMA BALDRAME E VIGAS BALDRAME

RESP. TÉCNICO PROJETO: RILY JOSÉ FERREIRO  
 MUNICÍPIO DE PARANAGUÁ  
 PREFEITO - Dr. EDISON DE OLIVEIRA KERSTEN

DATA: JUN/2014 ESCALA: INDICADA DESENHO: RLR ÁREA CONTROLADA: 405,95 m² PRONTO: 11/12