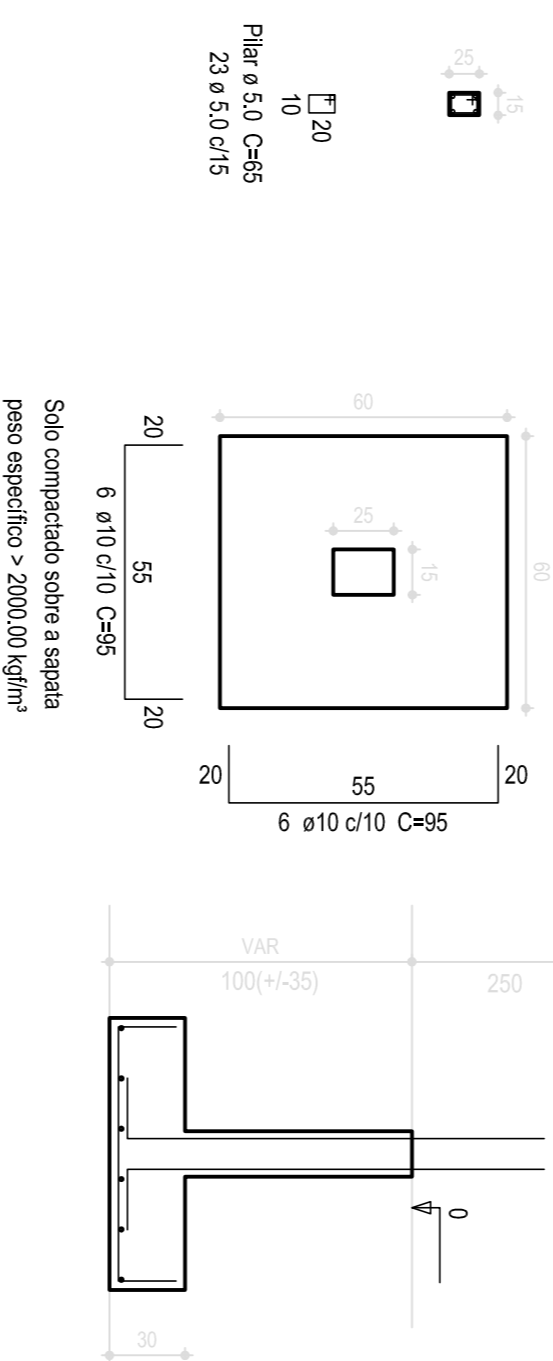
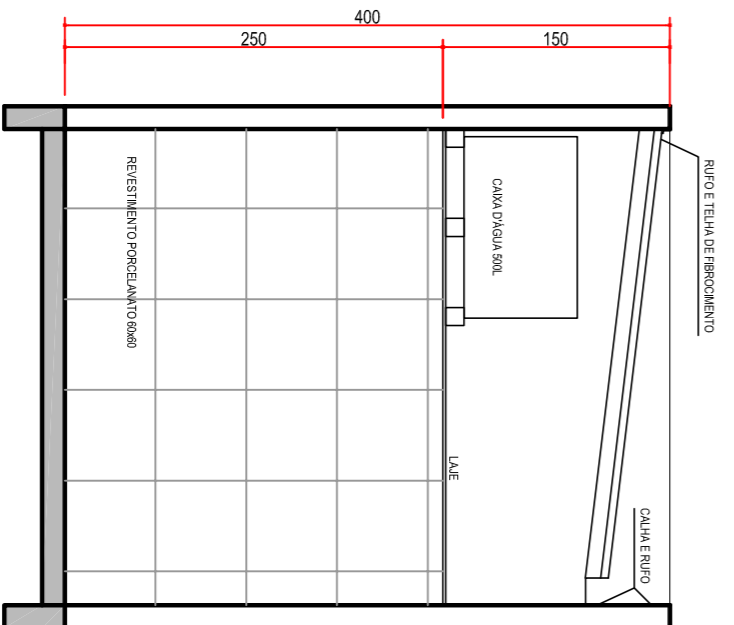


P1=P2=P3=P4=P5=P6=P7

S1=S2=S3=S4=S5=S6=S7

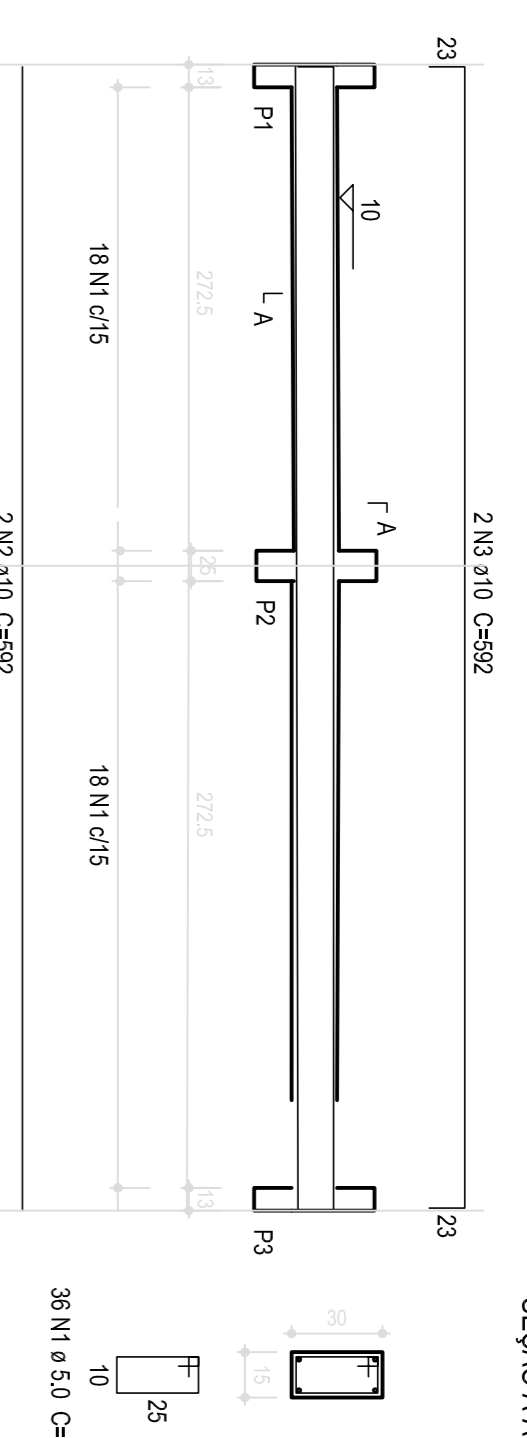


Solo compactado sobre a sapata  
peso específico > 2000,00 kg/m³



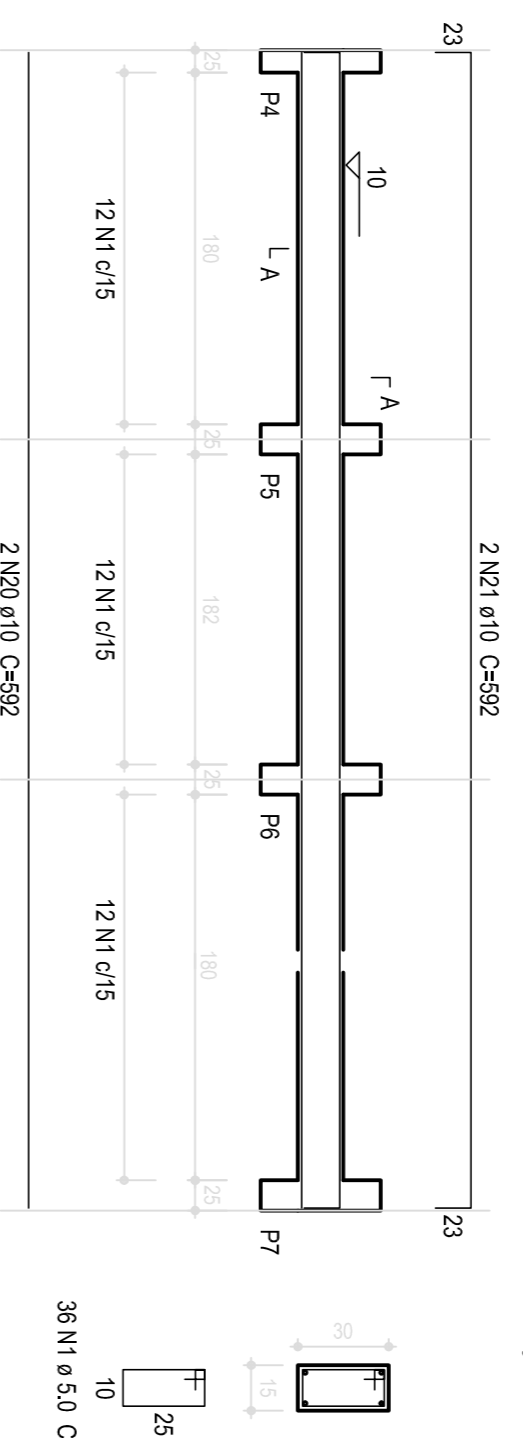
ESC.: 1:50

VB1  
1:50



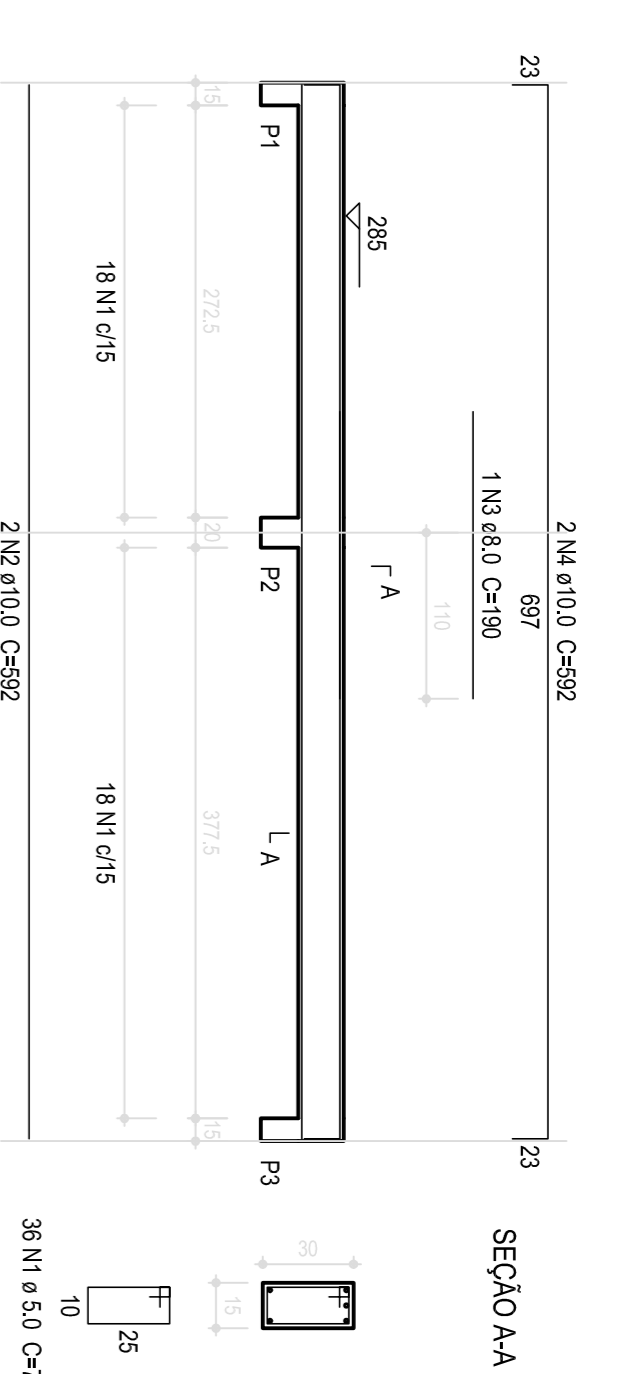
SEÇÃO AA

VB2



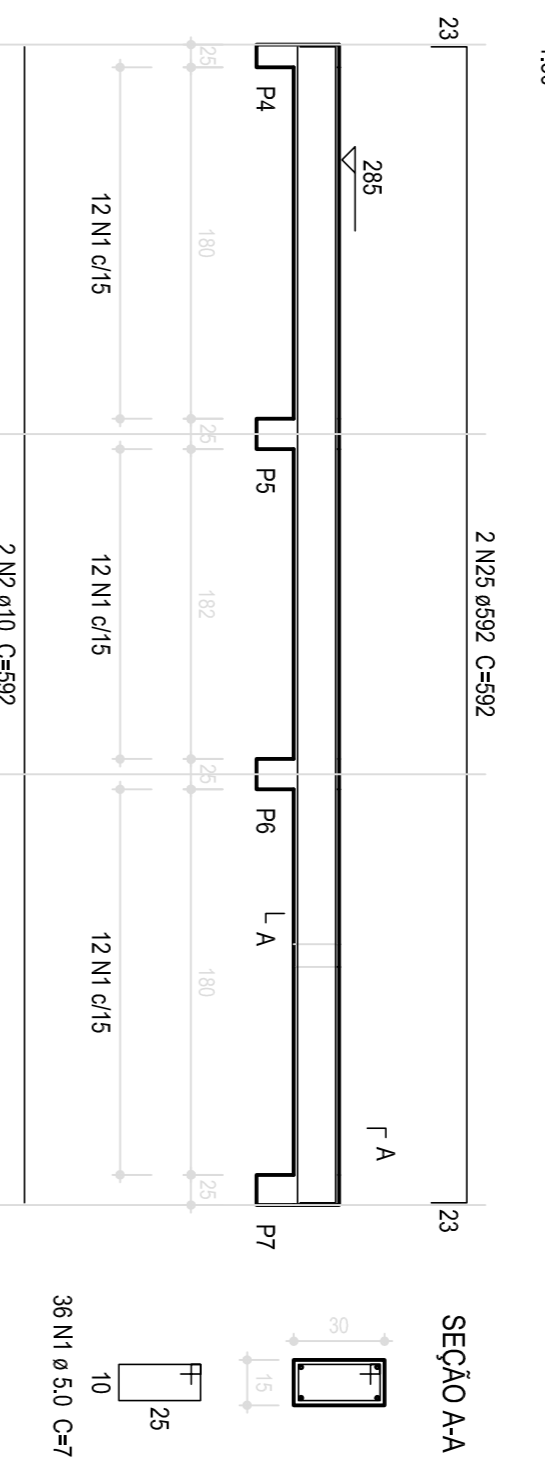
SEÇÃO AA

V1  
1:50



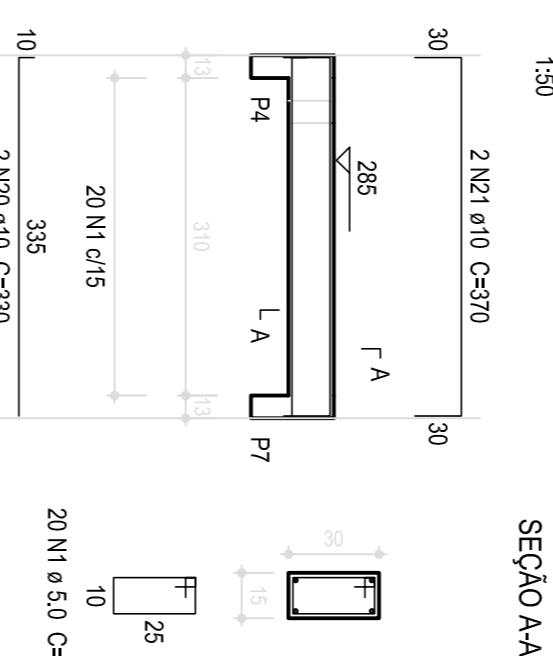
SEÇÃO AA

V2  
1:50



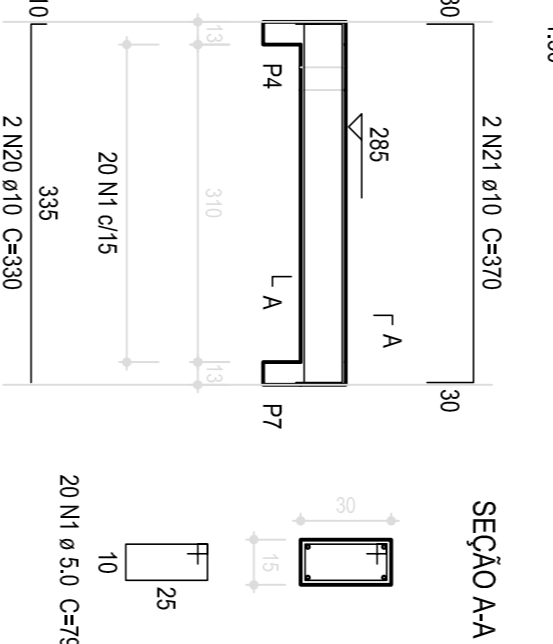
SEÇÃO AA

VB3  
1:50



SEÇÃO AA

V3  
1:50



SEÇÃO AA

Relatório do aço

ACO	N	DIAM	Q	UNIT	C.TOTAL
(cm)		(cm)	(cm)	(cm)	(cm)
CA50	SAPATA	10,0	84	95	7.980
	PLAR	10,0	28	350	9.800
	VB-1-2	10,0	08	592	4.736
	VB 3	10,0	08	370	2.960
	V-1-2	10,0	08	592	4.736
	V-3	10,0	08	370	2.960
	PLAR	5,0	161	65	10.465
	VB-1-2	5,0	72	79	5.688
	VB-3	5,0	20	79	1.580
	V-1-2	5,0	72	79	5.688
	V-3	5,0	20	79	1.580

Resumo do aço

ACO	DIAM	C.TOTAL	PESO + 10%
(cm)	(cm)	(m)	(kg)
CA80	5,0	290,01	0,154
CA50	10,0	331,72	0,616
			204,34

Vol. de concreto total (C-20) = 3,325 m³

Area de forma total = 79,59 m²



PREFEITURA MUNICIPAL DE PARANAGUÁ

ADMINISTRAÇÃO MARCELO ELIAS ROQUE

SECRETARIA MUNICIPAL DE SERVIÇOS URBANOS

SECRETÁRIO: ICARO JOSÉ WOLSKI PIRES

PROJETO ESTRUTURAL

TÍTULO: PLANTA BAIXA - DESCRIÇÃO

OUTRA: IMPLANTATION DE PLAYGROUNDO NO AEROPORQUE DOMINGOS PENEDA PASTOR RAFAEL

CONTEUDO: PROJETO DE PLANTA BAIXA - DESCRIÇÃO

AUTOR DO PROJETO: PREFEITURA MUNICIPAL DE PARANAGUÁ

DATA: DEZ/2018 ESCALA: INDICAÇÃO: DISSENHO: DRU: MEIA: 1:25,00 PRONTARIA: ÚNICA