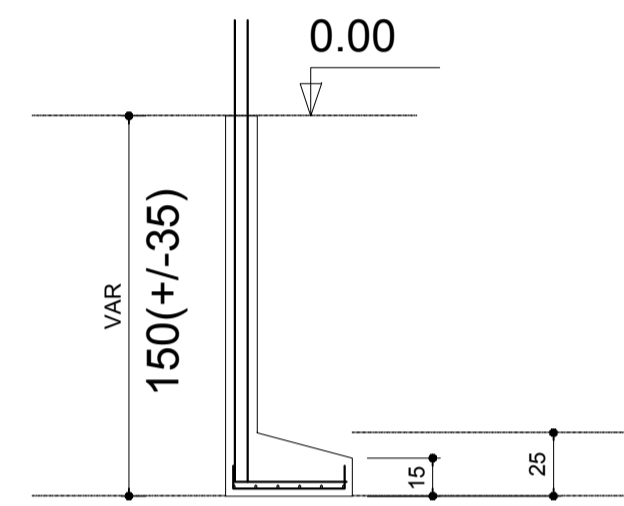
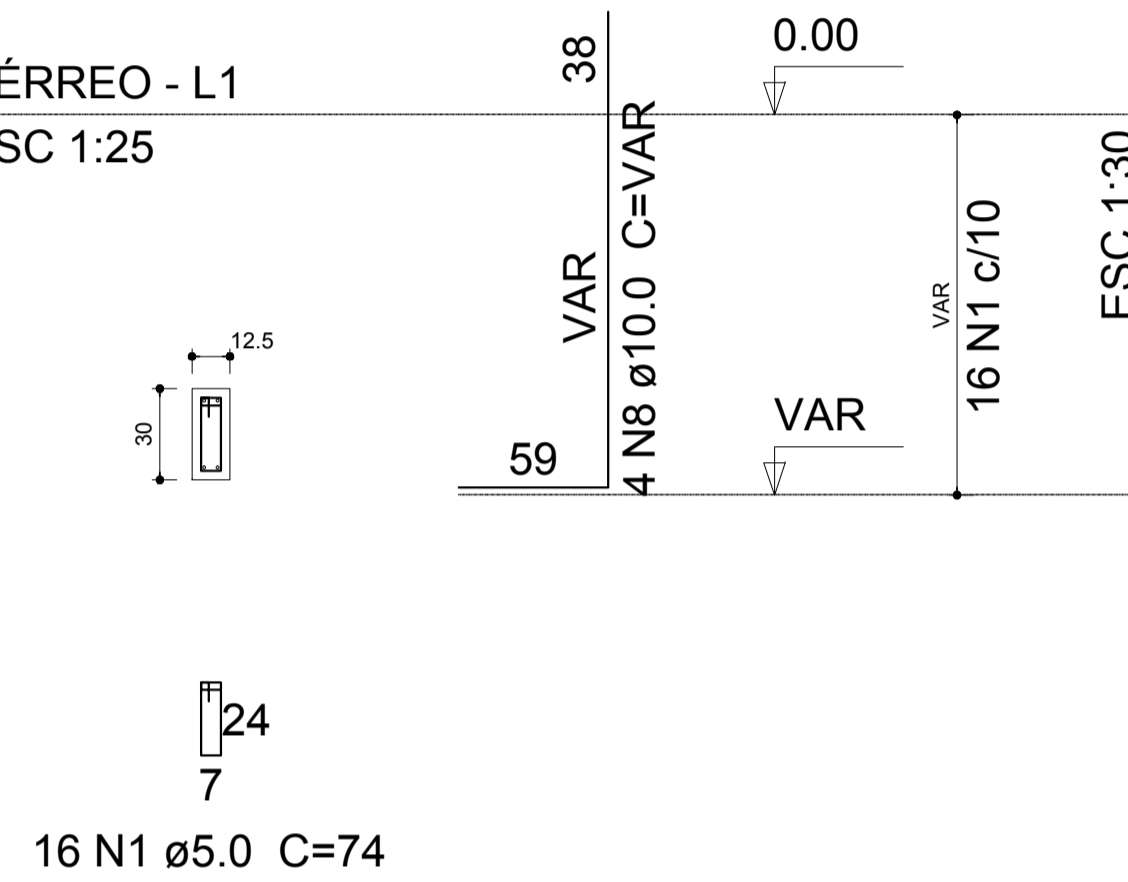


CORTE
ESC 1:30

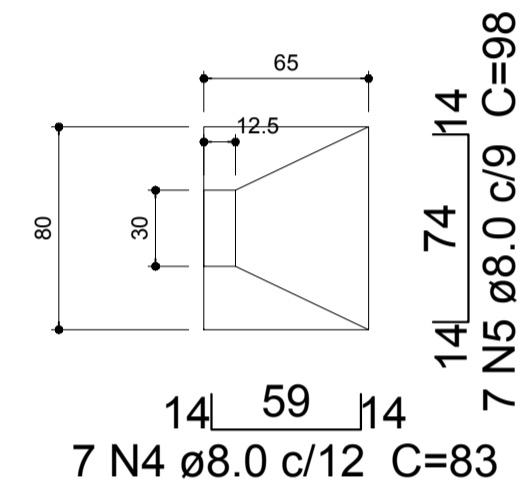


P37

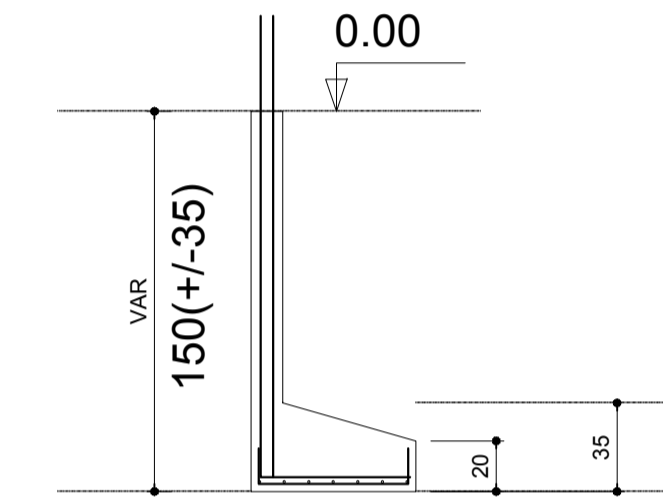
TÉRREO - L1
ESC 1:25



S37
PLANTA
ESC 1:30



CORTE
ESC 1:30



Relação do aço

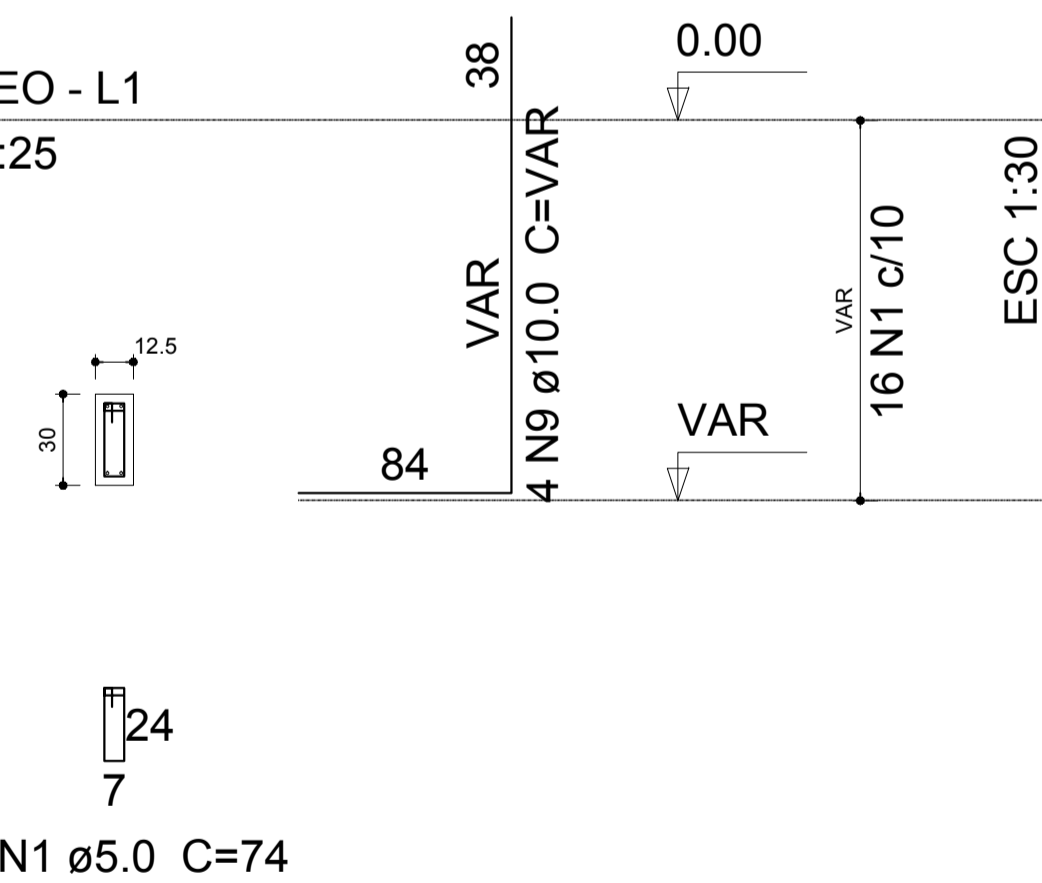
CAÇO	N	DIAM	Q	UNIT (cm)	C.TOTAL (cm)
CA60	1	5.0	32	74	2368
CA50	2	8.0	6	58	348
	3	8.0	6	78	468
	4	8.0	7	83	581
	5	8.0	7	98	686
	6	8.0	8	118	944
	7	8.0	9	98	882
	8	10.0	4	VAR	VAR
	9	10.0	4	VAR	VAR

Resumo do aço

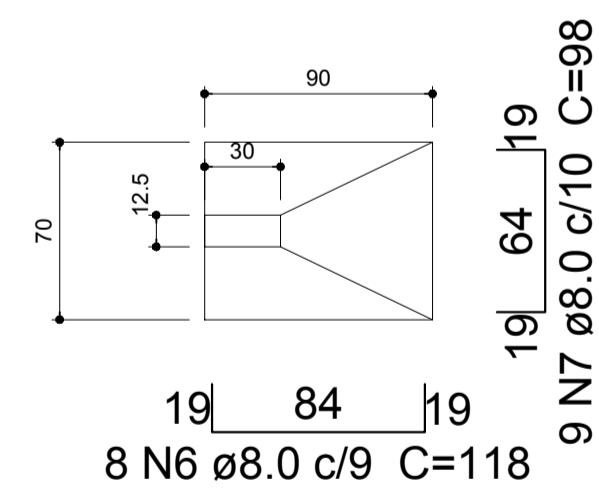
CAÇO	DIAM	C.TOTAL (m)	PESO + 10 % (kg)
CA50	8.0	39.1	17
	10.0	20.6	14
CA60	5.0	23.7	4
PESO TOTAL			
CA50		30.9	
CA60		4	

P38

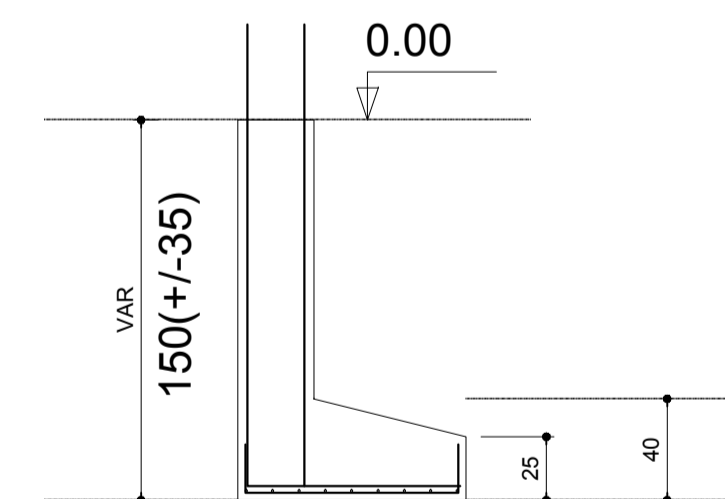
TÉRREO - L1
ESC 1:25



S38
PLANTA
ESC 1:30



CORTE
ESC 1:30



Vol. de concreto total (C-25) = 0.52 m³
Área de forma total = 4.59 m²

PREFEITURA MUNICIPAL DE PARANAGUÁ
ADMINISTRAÇÃO DR. EDISON DE OLIVEIRA KERSTEN
SECRETARIA MUNICIPAL DE OBRAS PÚBLICAS

TÍTULO
PROJETO DE ESTRUTURA DE CONCRETO ARMADO

OBRA
REFORMA E AMPLIAÇÃO CMEI - ZULEIDE PINTO ROSA

CONTEÚDO
- FUNDAÇÃO -

PROPRIETÁRIO: PREFEITURA MUNICIPAL DE PARANAGUÁ
AUTOR DO PROJETO: DEBORA TEMPORÃO DE AGUIAR RAMOS
CREA: PR-2647/D

DATA: Julho/2016
ESCALA: indicada
DESENHO: Debora
ÁREA AMPL: 163.95m²
ÁREA TOTAL: 399.63m²
PRANCHAS: 05/15